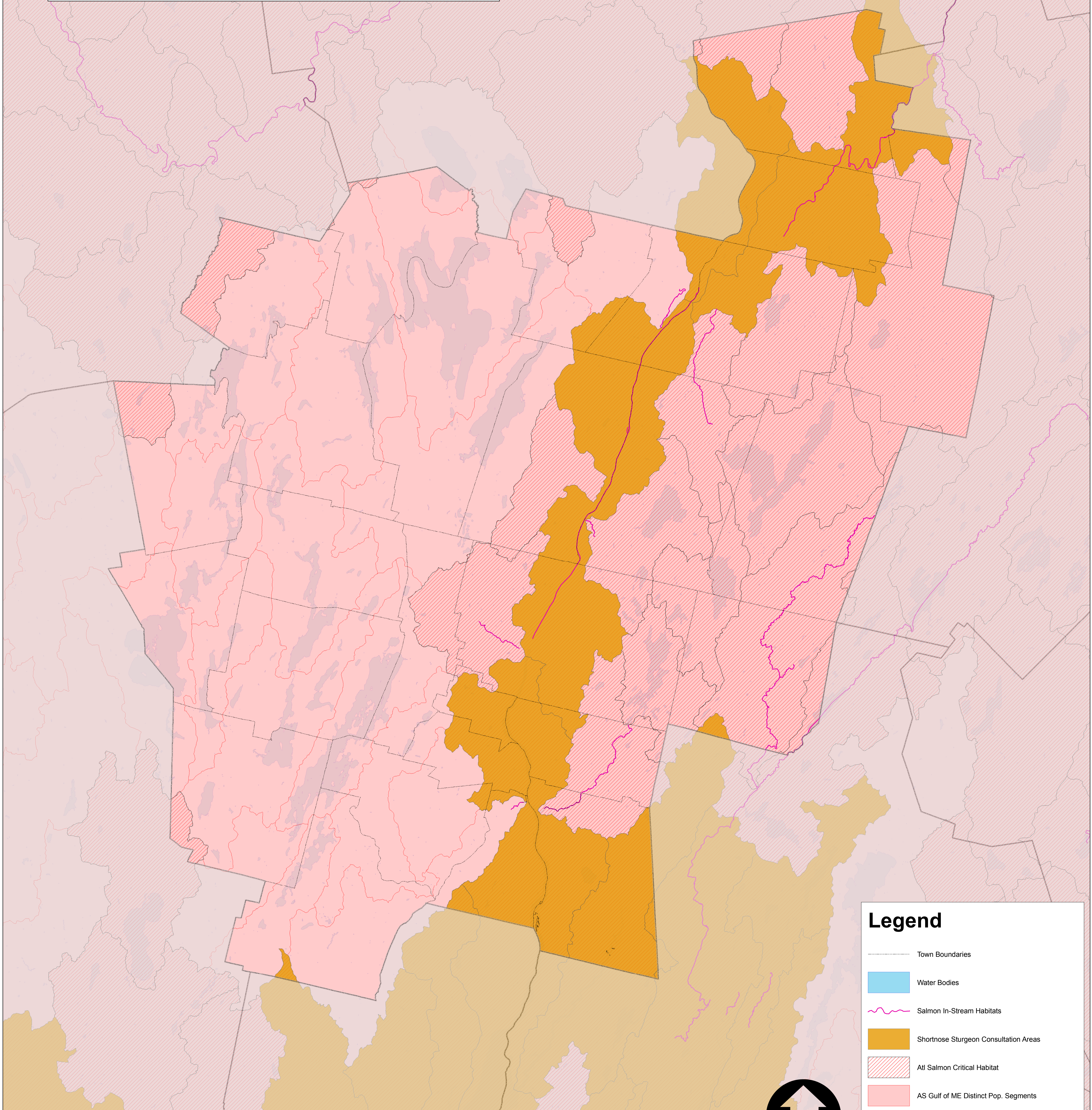


Kennebec County Federally Protected Habitats



Legend

- Town Boundaries
- Water Bodies
- Salmon In-Stream Habitats
- Shortnose Sturgeon Consultation Areas
- All Salmon Critical Habitat
- AS Gulf of ME Distinct Pop. Segments
- All Salmon Essential Fish Habitat Consultation Area
(Area designated by National Marine Fisheries Service in which, certain NRCS practices which may impact historic salmon habitat require interagency consultation with NMFS)

Data Sources: USDA-NRCS, Beginning with Habitat, ME IF&W, ME Office of GIS
Geo. Coordinate System: NAD 1983 UTM Zone 19N
Kennebec Soil & Water Conservation District
A. Grindle, November 2010

